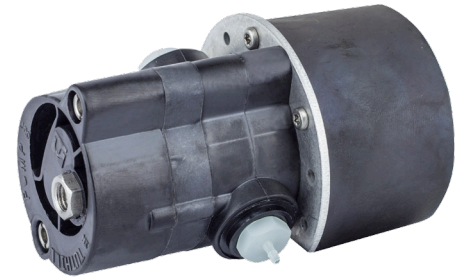
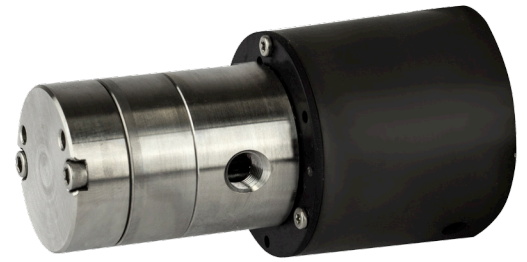


Magnetically coupled external gear pumps

are proven performers for medical equipment metering applications such as slide staining and medical lasers. They provide smooth, constant delivery of fluids, quiet operation, and long life.

The external gear pump is ideal for use with flow meters and other measuring devices. With these advantages, magnetically coupled external gear pumps provide improved system performance and substantial economic savings.



The Ideal Metering Pump Solution for Demanding OEM Applications

- Slide Staining
- Laser Cooling
- Chromatography
- Ultra Pure Water
- Kidney Dialysis
- CT Scanning

Application Benefits

- Controlled Chemical / Reagent Usage
- Non-pulsating flow
- Reliable, repeatable flow
- 20:1 Turn Down Ratio
- Self Priming
- Long, reliable wear life
- Quiet Operation

Design Features

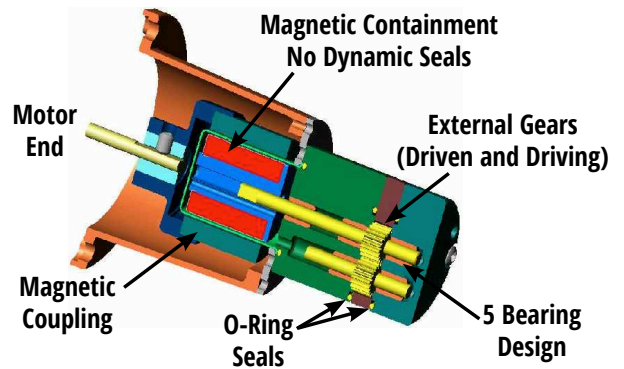
- Compact Installation
- Competitively Priced
- Magnetically Coupled Positive Displacement External Gear Pump
- 316 Stainless Steel, Hastelloy, Titanium, and Plastic
- Flows to 38 LPM
- Differential Pressures to 17 bar



Tuthill's miniature magnetically coupled gear pumps are the perfect solution for medical equipment designed with a small footprint for tabletop use in labs. This slide stainer has multiple pumps inside to allow for use of various reagents.

Tuthill Pumps offer **LEAK-FREE, SEAL-LESS CONSTRUCTION**, constant delivery, and versatility.

These pumps are known for their magnetically coupled, leak-free, seal-less construction, and the non-pulsing flow of their external gear design. This makes them perfect for demanding metering applications. If it requires a seal free, technically advanced pump, Tuthill Magnetically Coupled Pumps are the solution.



Performance Range of Flows and Pressures - 1ml/min to 38 LPM

Pump Size (ml/rev) Required to Meet Flow at 3500 RPM						
LPH	0 BAR	1.7 BAR	3.4 BAR	6.8 BAR	10.3 BAR	GPH
1.9	.11	.11	.11	.11	.19	0.5
3.8	.11	.11	.11	.11	.19	1
19	.11	.19	.19	.19	.23	5
38	.19	.23	.23	.38	.38	10
57	.38	.38	.38	.57	.57	15
76	.38	.57	.57	.57	.68	20
95	.57	.57	.57	.68	.80	25
113	.57	.68	.68	.80	.99	30
132	.68	.80	.80	.99	1.2	35
151	.80	.99	.99	.99	1.2	40
189	.99	1.2	1.2	1.3	1.6	50
227	1.2	1.3	1.3	1.6	1.6	60
303	1.6	1.6	2.0	2.0	2.3	80
378	2.0	2.0	2.3	2.6	2.6	100
568	5.3	5.3	5.3	5.3	-	150
757	5.3	5.3	5.3	5.3	-	200
946	5.3	5.3	5.3	8.0	8.0	250
1136	8.0	8.0	8.0	8.0	8.0	300
1514	8.0	8.0	12.	12.	-	400
1893	12.	12.	12.	12.	-	500
2271	12.	12.	12.	-	-	600
LPH	0 PSI	25 PSI	50 PSI	100 PSI	150 PSI	GPH

Magnet	G	X	W
millinewton meter	459	1695	3248
In-Oz	65	240	460