

## Summary

The Adhesive and Sealant market provides challenging fluid pumping applications including glues, caulking compounds, sealants, mastic, rubber cements, and more. Tuthill manufactures a range of positive displacement pumps that can accommodate the stringent application requirements of pumping high viscosity materials. The breadth of Tuthill's offering provides numerous options and features to meet the needs of various applications. This bulletin highlights where Tuthill has built a history of success and provides an introduction to the product lines that can meet your adhesive pumping needs:

## Applications

- Dosing
- Transfer
- Unloading/Loading Raw/Finished Media
- Finished Product Packaging
- Feeding Raw Materials

## Fluids

- Epoxy Resin
- Starch Adhesive
- Rubber Cement
- Cyanoacrylates (Fast Bonding Glue)
- Hot Melt
- Polyvinyl Acetate
- Additives, Dyes, and Colorants

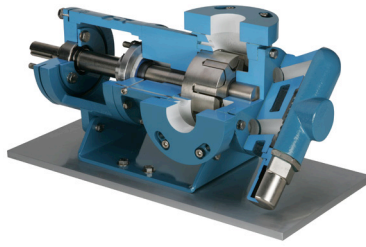
## Fluids Characteristics

- Corrosive Chemicals
- Wide Viscosity Range: 1 - 1,000,000 cp
- Temperatures up to 400 °F (204 °C)
- Occasional High Pressures
- Some Abrasive Fillers and Additives

## Product Range

	Flow Range	Viscosity	Temperature	Pressure
<b>GlobalGear®</b>	to 550 GPM ( 125 m <sup>3</sup> /hr)	to 250,000 cp	to 600 °F (315 °C)	to 200 PSI (14 Bar)
<b>Heavy Duty</b>	to 650 GPM ( 147 m <sup>3</sup> /hr)	to 5,000,000 cp	to 525 °F (273 °C)	to 450 PSI (30 Bar)
<b>4000 Series</b>	to 84 GPM ( 19 m <sup>3</sup> /hr)	to 3,000 cp	to 375 °F (190 °C)	to 500 PSI (34 Bar)
<b>D &amp; T Series</b>	0.01 - 650 GPH (0.04 - 318 L/hr)	0.3 - 10,000 cp	to 350 °F (176 °C)	to 250 PSI (17 Bar)

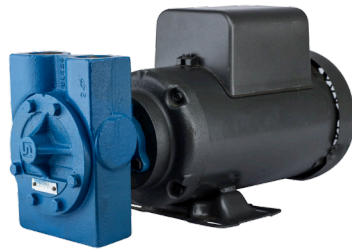
## GlobalGear® Series



### Processing and Transfer

- Premium Materials: Large 4140 Steel Shaft
- Non Galling / Hardened Parts
- Back Pull Out Design for Easy Maintenance
- Flange and NPT Ports
- Variety of Seal Solutions
- Seal flexibility: Tuffseal™ / Perfluoroelastomers
- API Plan 13 Seal Vent to Suction for flushing  
Increases Life & Prevents front of Seal Build Up
- Jacketed Bracket & Covers
- Low NPSHR

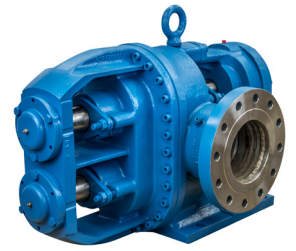
## 4000 Series



### Lubrication and Circulation

- Light Duty
- Carbon Bushings
- Hardened Steel - Idler Gear
- Competitively Priced for Lighter Duty Applications
- Compact Footprint

## Heavy Duty Series



### Demanding Process Conditions

- Viscous Fluids to 1,000,000 CPS
- Variable Sealing Options Available
- Hardened Surfaces for Abrasive Applications
- Hot Clearances / Steam Jackets Available  
Temperatures to 525 °F
- Pressure to 400 PSI
- Low Shear
- Run Dry

## D & T Series



### Precision Metering/Dispensing

- Sealless Mag Drive External Gear Design
- Compact Footprint
- Smooth Non-Pulsing Flow
- Low Slip to Displacement Ratio
- Prevents air infiltration in adhesive, eliminating issues commonly found with shaft seals
- No Vapor Lock or Release of VOC Fumes
- Chemical and Corrosion Resistant Materials (Stainless Steel, Titanium, & Hastelloy C)
- NPT or Flange Ports Available